



FRESNO ENERGY CENTER

2536 N. Grove Industrial Drive, Fresno, CA 93727

The CCC Fresno Energy Center conducts energy-efficiency projects throughout Northern and Central California. The non-residential center is home to 30 Corpsmembers, who commute to the center each day for work.

LIFE AT THE FRESNO ENERGY CENTER

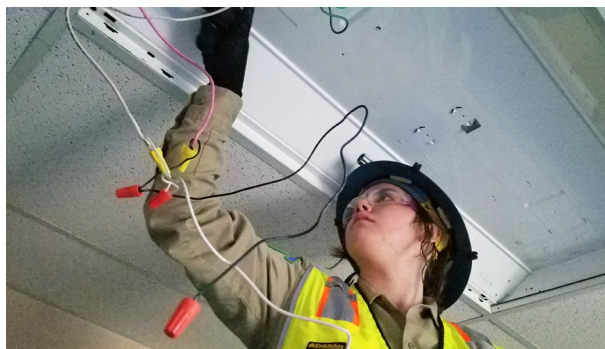
Crews at the Fresno Energy Center typically work four, 10-hour days each week, often at night. Corpsmembers will also stay at accommodations close to project work sites for up to eight days straight. Corpsmembers working to earn their high school diplomas take classes after work hours. All Corpsmembers complete CCC Core Training classes and are encouraged to take additional courses to become more responsible, well-rounded, and highly employable adults following their experience.

PROJECTS

The Fresno Energy Center completes energy survey, lighting retrofit, lighting control system retrofit, solar panel installation, HVAC controls projects and more. The CCC Energy Corps is funded by the Greenhouse Gas Reduction Fund. A majority of GGRF funds are required to benefit disadvantaged communities. GGRF dollars allow CCC Energy Corps to provide labor at minimal cost to public agencies and non-profits serving disadvantaged communities.

2019 FEATURED PROJECT

Fresno Energy Corpsmembers spent weeks living and working near their project site in Rosamond where they were conducting lighting retrofit work at Southern Kern Unified School District facilities. At Tropic Middle School, Corpsmembers worked quickly and as a team to replace older, less energy efficient fluorescent bulbs with new LEDs (pictured).



EDUCATION AND TRAINING

Specialized trainings and certifications available at the Fresno Energy Center include:

- ▶ Cal-OSHA 10-hour Safety Training
- ▶ Introduction to Wiring & Lighting Retrofits
- ▶ Ladder Safety
- ▶ First Aid & CPR
- ▶ Energy Efficiency Basics & Data Collection for Energy Surveys
- ▶ Lockout-Tagout Safety
- ▶ Scissor/Aerial Lift Safety
- ▶ Power Tools Safety and Operation
- ▶ Lighting Control Installation